

NEW YORK
YIMBY

RAMSA's 200 East 83rd Street Wrapping Up Construction On Manhattan's Upper East Side



200 East 83rd Street. Rendering by DBOX.

BY: [MICHAEL YOUNG AND MATT PRUZNICK](#) 8:00 AM ON DECEMBER 4, 2022

At number 28 on our annual construction countdown of the tallest projects underway in the city is [200 East 83rd Street](#), a 35-story residential tower nearing completion in the [Yorkville](#) section of Manhattan's [Upper East Side](#). Designed by [Robert A.M. Stern Architects](#) and developed by [Naftali Group](#) and [Rockefeller Group](#), the 489-foot-tall structure will yield 205,877 square feet and 86 condominium units with sales and marketing led by Compass, as well as 3,033 square feet of ground-floor retail space and parking for 26 vehicles. [SLCE Architects](#) is the architect of record and Leeding Builders Group is the general contractor for the property, which is located at the corner of Third Avenue and East 83rd Street.

Additional windows and limestone façade panels have been installed since [our last update](#) in July, including on the eastern elevation, where the construction elevator is being dismantled. Only a few finishing touches remain, such as the installation of windows near the top of the tower and at its midpoint. Sidewalk scaffolding still surrounds the property, but should be removed in the coming weeks as exterior work wraps up.



200 East 83rd Street. Photo by Michael Young



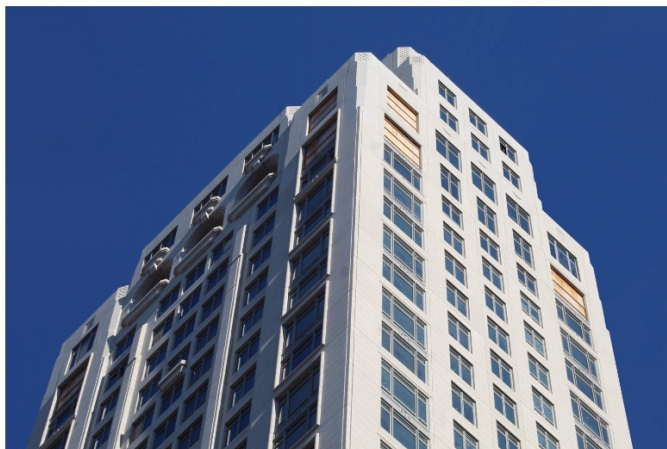
200 East 83rd Street. Photo by Michael Young



200 East 83rd Street. Photo by Michael Young



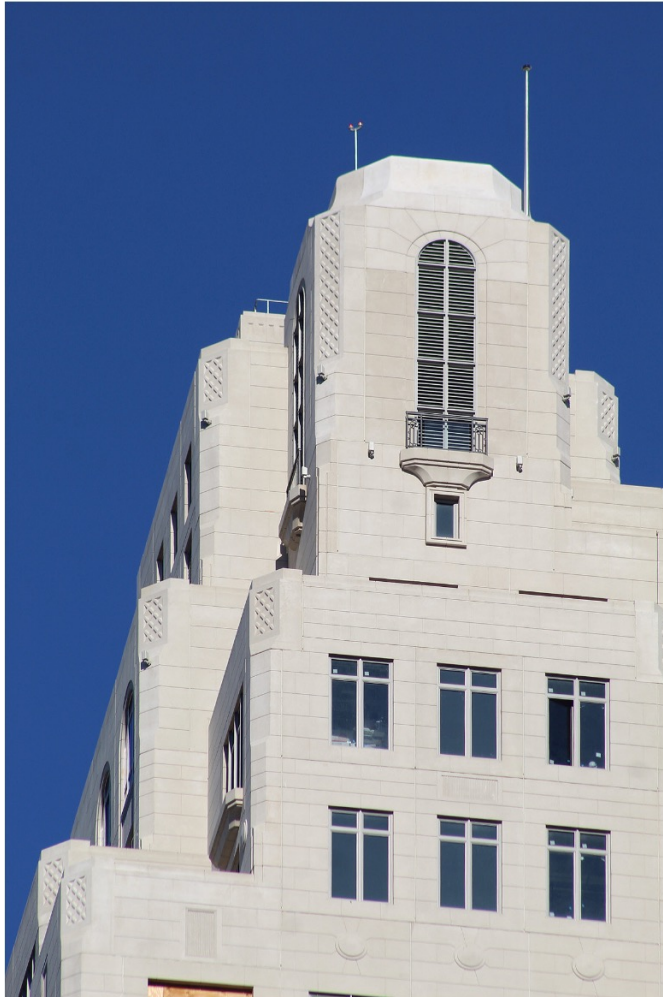
200 East 83rd Street. Photo by Michael Young



200 East 83rd Street. Photo by Michael Young



200 East 83rd Street. Photo by Michael Young



200 East 83rd Street. Photo by Michael Young



200 East 83rd Street. Photo by Michael Young



200 East 83rd Street. Photo by Michael Young



200 East 83rd Street. Photo by Michael Young



200 East 83rd Street. Photo by Michael Young



200 East 83rd Street. Photo by Michael Young



200 East 83rd Street. Photo by Michael Young

Homes will come in one- to six-bedroom layouts and with pricing from \$2.05 million to \$32.5 million. Two-bedrooms begin at \$3.175 million, three-bedrooms at \$4.35 million, and four-bedrooms at \$5.35 million. There are also three penthouses available in five- or six-bedroom layouts with prices from \$23 million to \$32.5 million. Each comes with private outdoor space.

The condominium units start on the seventh floor with a maximum of four homes per level. Apartments on the lower floors have an average span of 2,000 square feet. Two full-floor penthouses are located on the 32nd and 33rd stories, followed by a duplex penthouse above.

Residents of the building enjoy a robust collection of club-like wellness and entertainment offerings situated within monumental spaces. The comprehensive amenities at 200 East 83rd include a vaulted porte-cochere with automated parking opening onto a private courtyard; a 70-foot pool with double-height vaulted ceilings and honed limestone walls on the 17th floor, opening to a loggia with expansive views of the New York City skyline and Central Park; a Winter Garden featuring a double-height loggia with floor-to-ceiling arched windows, vaulted ceilings, and access to an outdoor terrace that can be booked for private gatherings; and a wood- and leather-paneled library that features a fireplace framed by bespoke Rottet Studio-designed marble mantelpiece and has an adjoining landscaped garden. 200 East 83rd also boasts a state-of-the-art fitness center and yoga studio; a luxurious spa with a steam room, sauna and custom-designed treatment room; playrooms and a private cinema. The sophisticated lobby at 200 East 83rd will be attended 24 hours a day with a doorman and concierge service.

200 East 83rd Street is slated for completion next winter.

<https://newyorkyimby.com/2022/12/ramsas-200-east-83rd-street-wrapping-up-construction-on-manhattans-upper-east-side.html>