

## 200 East 83rd Street's Façade Installation Continues On Manhattan's Upper East Side



BY: MICHAEL YOUNG 8:00 AM ON NOVEMBER 2, 2021

Façade installation is continuing to progress on 200 East 83rd Street, a 35-story residential tower on Manhattan's Upper East Side. Designed by Robert A.M. Stern Architects and developed by Naftali Group and Rockefeller Group, the 243,128-square-foot reinforced concrete superstructure will yield 86 units spread over 205,877 square feet, averaging 2,393 square feet apiece. Sales for the homes are currently underway and are being handled by Compass. SLCE Architects is the architect of record and Leeding Builders Group is the general contractor for the project, which is located at the corner of Third Avenue and East 83rd Street.

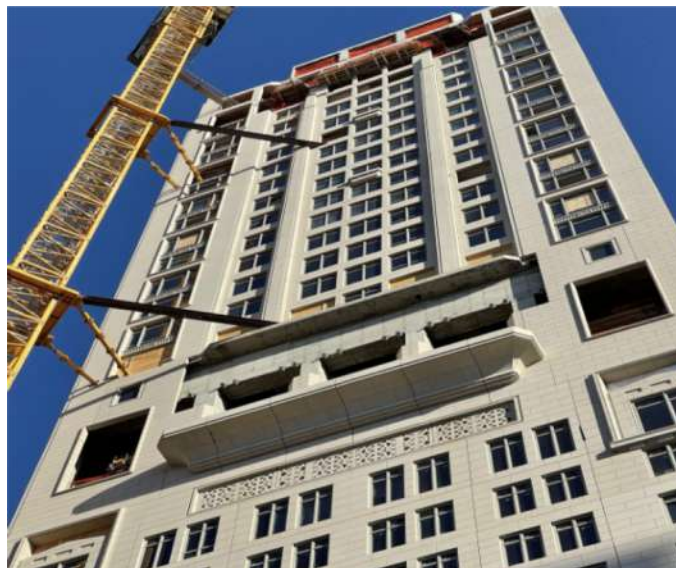
The prewar-style exterior cladding has risen steadily since our last update in early June, and is nearing the 449-foot-tall parapet.

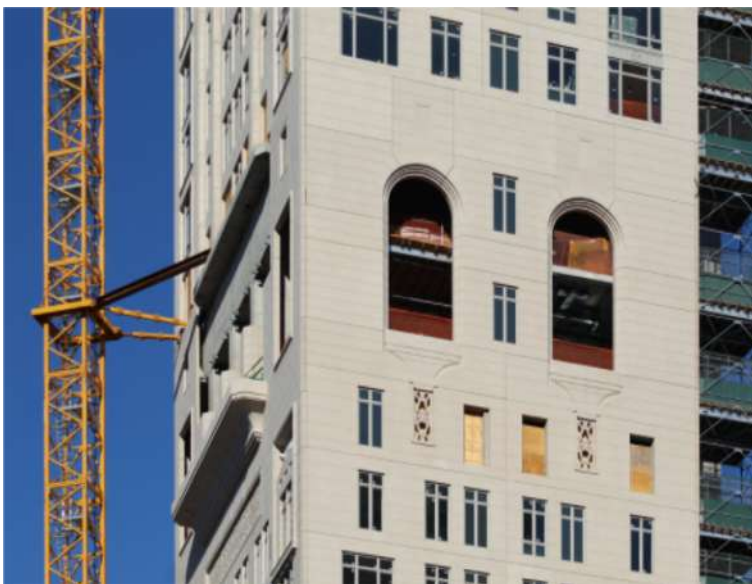
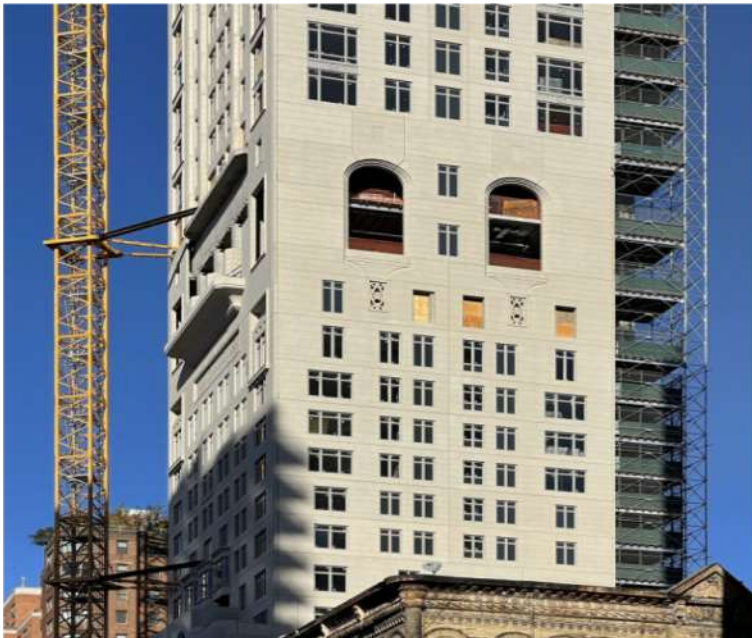




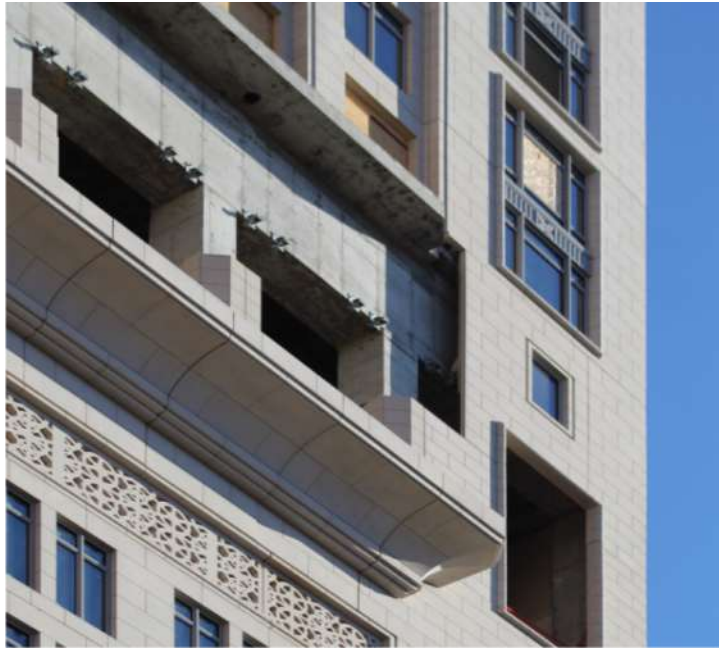
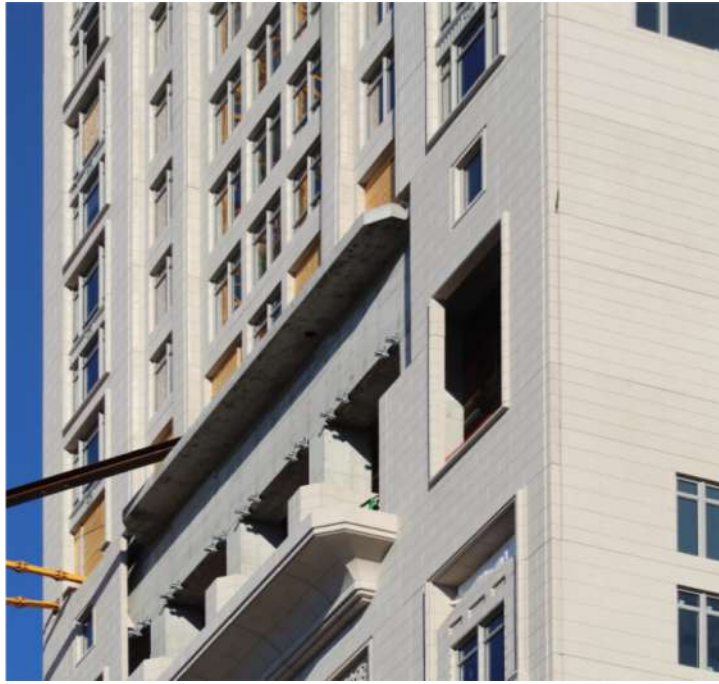


The windows and elegantly designed wall panels have quickly been installed on each floor and only a handful of levels around the multi-faceted crown remain to be enclosed. The midpoint of 200 East 83rd Street features a number of intricate architectural elements including an elongated balcony on the western elevation above Third Avenue and a pair of arched openings on the northern and southern sides. The yellow construction crane should likely come down after all the panels are put into place, while the exterior hoist on the east-facing backside of the structure would follow suit later when interior work is nearing completion.















YIMBY last announced that 200 East 83rd Street is expected to accommodate space for 3,033 square feet of ground-floor retail with frontage on both Third Avenue and East 83rd Street, and an additional 26 enclosed parking spaces. Below are renderings by DBOX from 200 East 83rd Street's main website that depict the crown and upper floors along with the motor courtyard and ornate ground-level façade details.









Buyers have a choice of one- to six-bedroom units, which are priced from \$2.05 million to \$32 million. Two-bedrooms are priced at \$3.175 million, three-bedrooms are going for \$4.35 million, and four-bedrooms are asking \$5.35 million. Three penthouses are available in five- or six-bedroom layouts with prices varying from \$23 million to \$32 million. Each penthouse will feature private outdoor space. The units begin above the seventh floor with a maximum of four homes per level. Full-floor penthouses are found on the 32nd and 33rd stories, and above them is a duplex penthouse occupying the last two levels.

Apartments on the lower section of the tower average around 2,000 square feet each, and all residents have access to amenities including a gated motor courtyard; a spa with a steam room, sauna, and treatment rooms; a private courtyard and winter garden; a media room; and multiple children's playrooms for different age groups. The 17th level is reported to be wholly dedicated to the wellness amenities and a landscaped terrace and yoga room.

Work on 200 East 83rd Street is slated for completion next winter, as noted on the on-site construction board.